

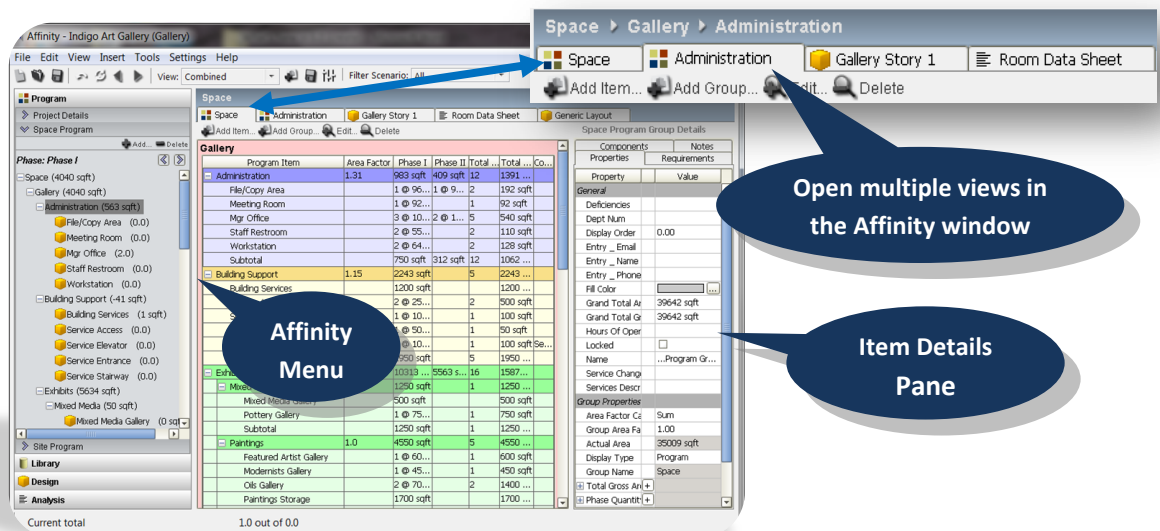
AFFINITY DESKTOP

Affinity Menu & Navigation

Affinity 6.0 showcases an updated look and feel, as well as improved organization and functionality between the three main panes: menu (left), window (middle), and item details (right). Follow a logical left-to-right order when working with Affinity 6.0. Double-click an item in the left menu to open a view of it in the middle window. Then, select the item to see its related information in the right details pane.

Open Multiple Views in the Affinity Window

The Affinity views can be easily opened and arranged in the window to display only **active views**. Simply click between the view tabs to quickly edit, compare, or present the various views. For instance, for a full project overview, you may open the space program, relationships diagram, 2d stacking diagram, SD project outline, space program report, and the story design view that you are currently working on.



CONCEPTUAL & SCHEMATIC DESIGN

Library Menu

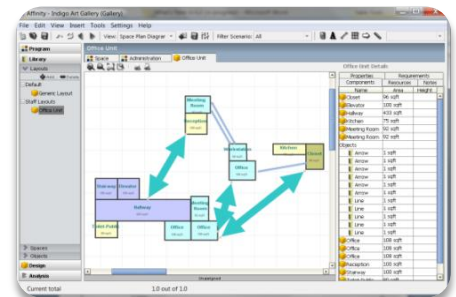
Affinity 6.0 has expanded to four menus: Program, Library, Design, and Analysis. 'Library' contains the template spaces & objects libraries and the new **Layouts** section for conceptual design development.

Layouts View & Conceptual Design Tools

The **Layouts** section (in the Library menu) can be used to:

- develop conceptual designs
- create process diagrams for presentations
- prepare groups of spaces such as departments, hospital wings, or patient pods

Layout views in this section are independent of the program and design menus. Designers can add them to the space program, or place them in any schematic design view.



Graphic Overlays

Overlay tools are available via icons in the toolbar within the Schematic Design, Layouts, and Relationships Diagram views. Use these tools to:

- customize diagrams & designs by adding text boxes, arrows, lines, grids, shapes, and dimension lines to any graphical view
- create more detailed diagrams in the schematic design view for presentations



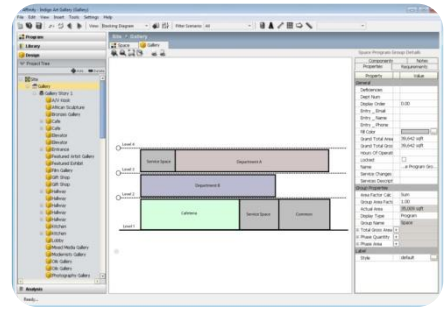
Any of these views can then be printed as an addendum to existing reports to send to clients and other project team members.

CONCEPTUAL & SCHEMATIC DESIGN (cont'd)

2D Stacking Diagrams

2D Stacking Diagrams are new in Design. Use them to:

- Arrange departments vertically between floors
- Add departments to a floor by right-clicking, or by dragging/dropping them from the menu pane
Note: the row length represents the story area
- Split and/or move color-coded Departments to different floors in this view
- Adjust department areas by manipulating the dividers between each department



Expanded Shape Editing Tools

Schematic design includes new tools for more precise shape editing and styles including:

- Editing of curved walls in room shapes
- Interactive dimension display when dragging walls to resize
- Improved snap alignment behavior
- Simplified style editing and selection for labels and text boxes

REPORT EDITOR

Table Cell Editing

Several key improvements have been introduced to enable quick and simple table cell editing:

- Directly edit cell contents – text or equations – by double-clicking in any cell
- Resize tables and grids by dragging the dividers between columns
- Right-click to add new columns or rows

User-Friendly Equation Dialog

Common equations (e.g. DATE, AREA) are now available for quick entry in report cells via a new shortcut. Double-click to select - the related equation will automatically be entered in the cell.

Improved Style Dialog & Options

The style viewer has an improved WYSIWYG display of formats for quicker editing and provides a new format tab for one-time style changes that do not need to be added to style sheets.

REVIT® ARCHITECTURE PLUG-IN

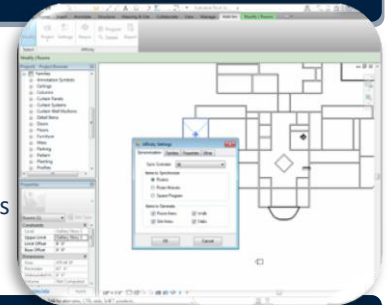
Review Project & Item Mapping

A new tabular synchronization window in Revit enables project teams to track mappings between Affinity and Revit.

Additional Synchronization Control

New tools improve generation of room boundary lines and provide project teams with additional control over room synchronization.

- Synchronize rooms as areas rather than rooms with boundaries
- Optionally synchronize departments as areas



TEAM PROJECT & LICENSE KEY MANAGEMENT

Manage Team Projects

New Team Project management capabilities enable dynamic work sharing and collaboration for project teams whether they are in the same office, or dispersed across multiple offices. Key features include:

- One-time configuration of a central repository for storing, sharing, and editing Affinity projects
- Edit in online mode for live, real-time collaboration directly on the central repository
- Lock/unlock any items in the program (building, department, story, room, object, etc.) to simultaneously work on a project without the risk of overwriting other team members' changes
- (Optional) Setup a data repository using MS SQL Server database

IT Management & Administration

The new License Key Server delivers significant time savings for IT Managers by delivering automated license key management capabilities, including automatic key refreshes per active subscription.

ONLINE DOCUMENTATION

Affinity Online Documentation

In addition to the standard documentation with the software download, Affinity 6.0 documentation will also be available online, providing users with the most up-to-date information and tutorials.