

Affinity for Revit facilitates the process of creating multiple schematic designs from a program, then loading those different scenarios into Revit as Design Options.

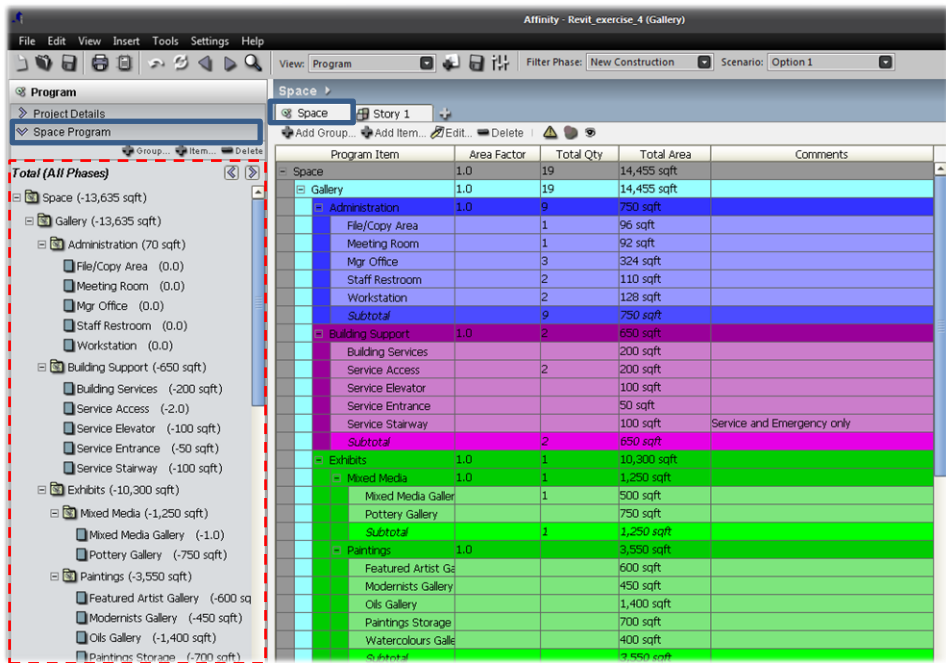
Typically, schematic design is not as simple as just creating one layout and moving on. Designers create multiple layouts which continue to be developed simultaneously until a final layout is decided upon. Affinity gives you the ability to create those multiple layouts within one file using the ensuring that Program to Design compliance. Affinity also allows you to transfer your multiple layouts into Revit as Design Options. This Use Case describes the process of creating multiple scenarios for schematic design in Affinity from a program then loading those designs directly into Revit as Design Options for development. This allows you to move forward with the development process without deciding on your final design.

## 1. Creating Multiple Scenarios in Affinity

Affinity easily allows the user to create multiple scenarios of a schematic design by dragging program spaces directly into a floor plan and assigning them to a particular layout. All the program space properties, components and requirements are associated with the spaces that are used when creating the designs.

### A. OPEN & SETUP

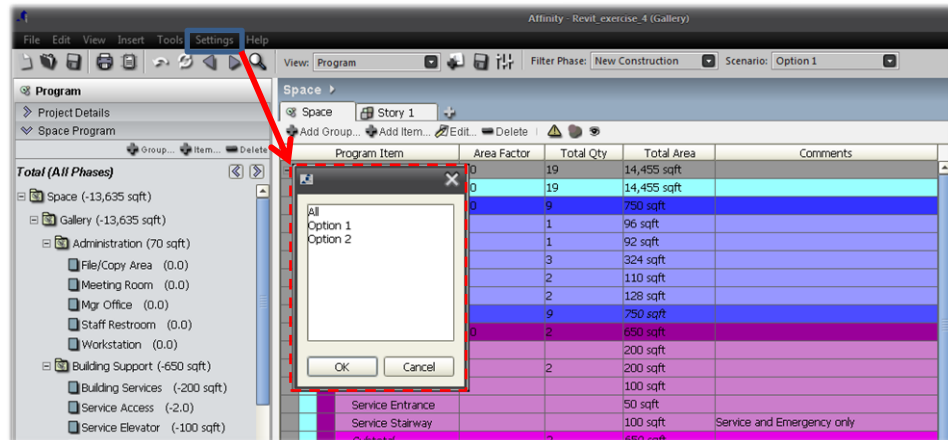
#### Affinity Program



- Once a Program is created or imported, a list and count of all of your required Program spaces will show up in the Navigation bar under the Space Program tab.

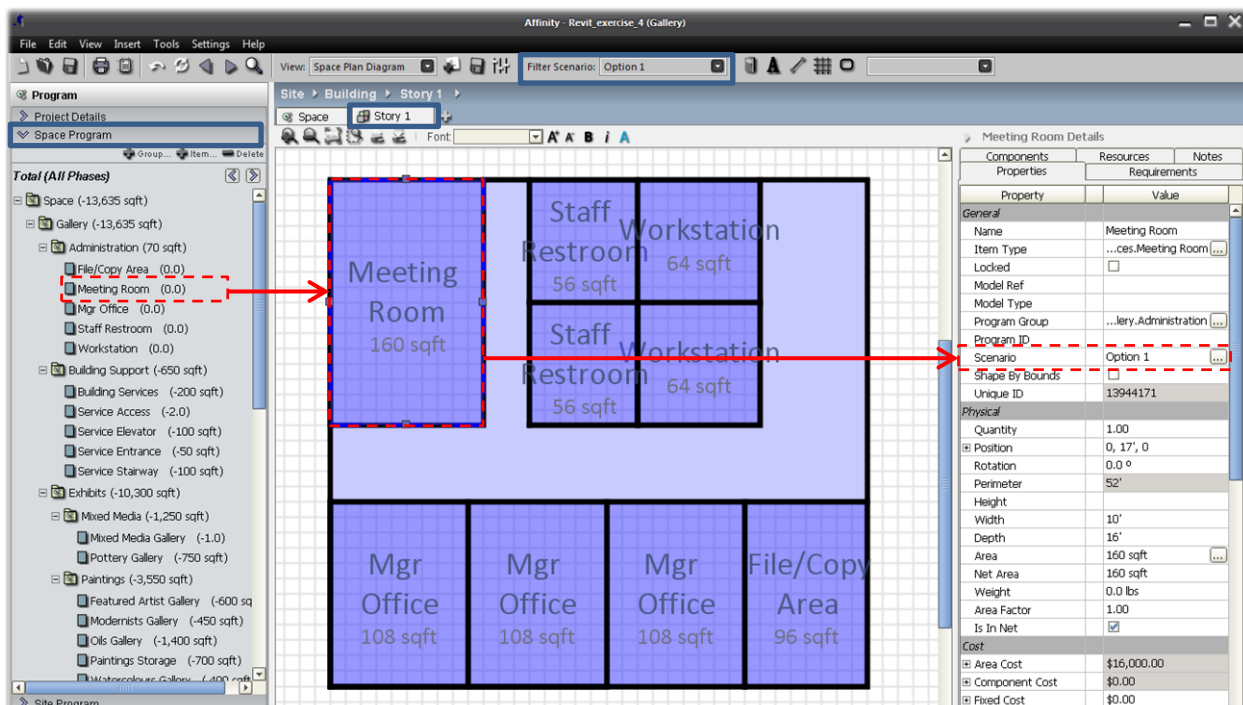
## B. CREATE SCENARIOS

- Multiple Scenarios can be created by tying them into the 'Edit Scenarios' dialog box



## C. DRAG & DROP

### Affinity Design

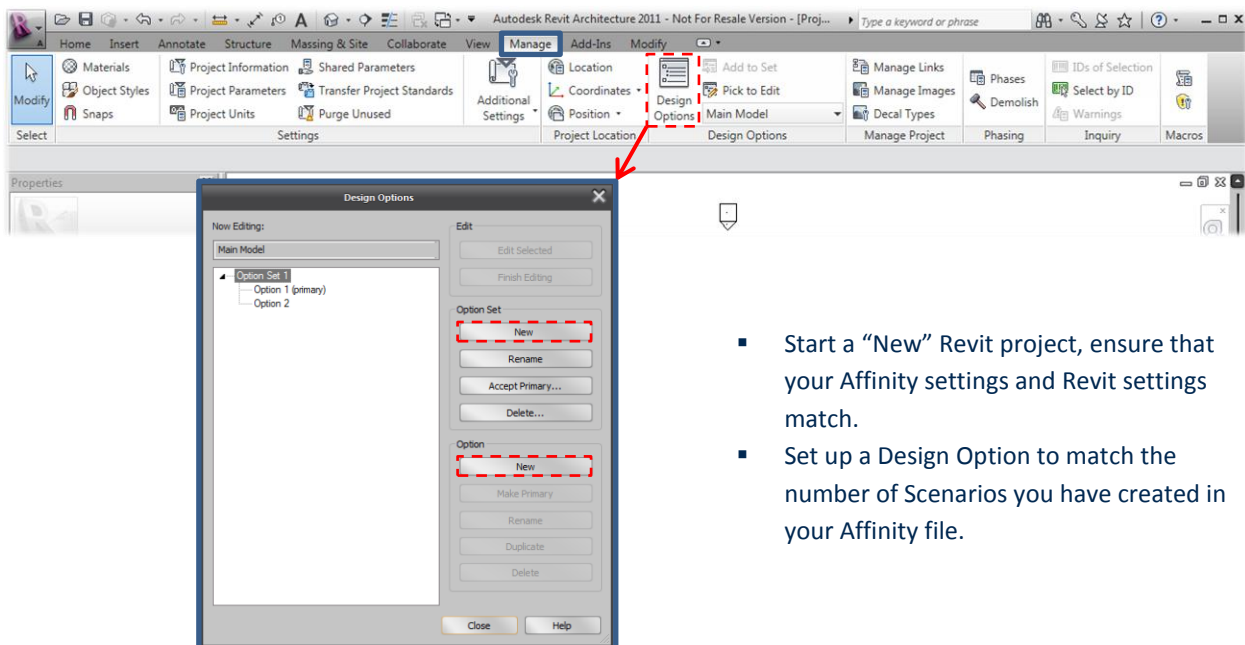


- A Design can quickly be created by selecting spaces from your Program Space tree and dragging them onto a "Story" plan.
- You can quickly assign that Design to particular Scenario and layout another Design for another Scenario
- Your program will respond to each Scenario separately and allows views of each Program to Design compliance

## 2. Loading Affinity Scenarios into Revit as Design Options

Affinity provides an easy-to-use plug-in for Revit. Through the loading process, a Design can simply be transferred directly into Revit for further design and development. Affinity also allows multiple scenarios to be loaded into one Revit file as Design Options.

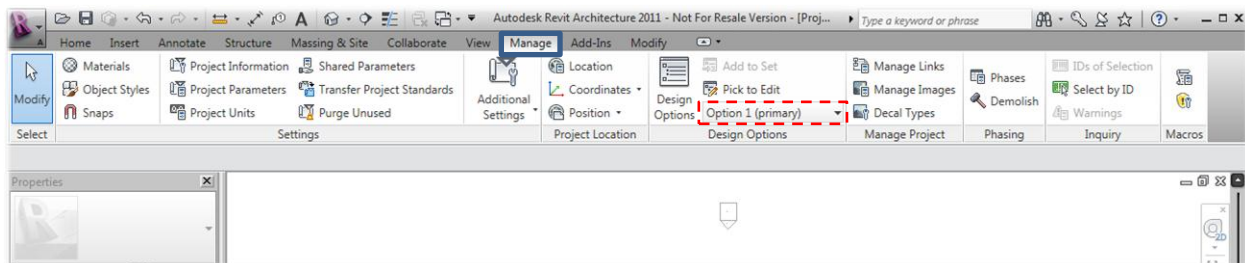
### A. OPEN & SETUP



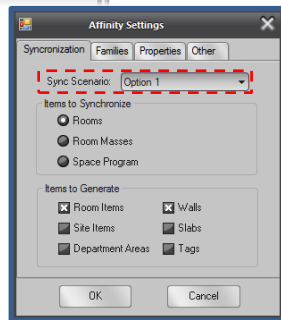
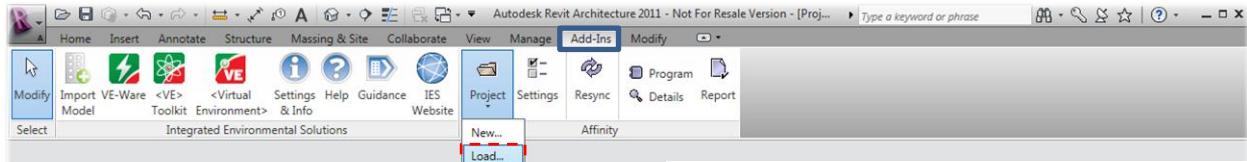
- Start a “New” Revit project, ensure that your Affinity settings and Revit settings match.
- Set up a Design Option to match the number of Scenarios you have created in your Affinity file.

### B. LOAD SCENARIOS

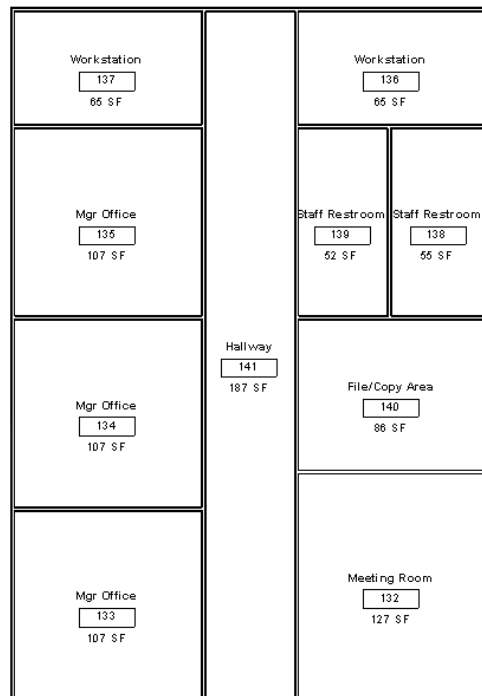
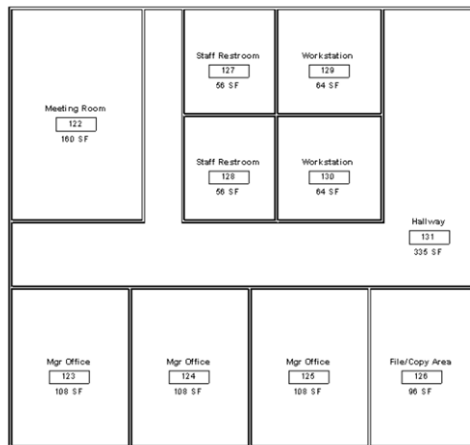
Each Affinity Scenario is loaded into Revit with simple steps.



- Ensure you are within your particular Design Option when loading the Affinity Scenario and not in the Main Model in Revit



### Revit Designs



- In a short period of time, you will have multiple layouts organized in a Design Option for further development or presentations.

### 3. SUMMARY

In summary, Affinity provides a series of easy-to-use tools to create multiple early conceptual or schematic designs that can then be loaded into Revit and organized as a Design Option. This Use Case walks through the process of starting with just an Affinity program, creating multiple designs in Affinity based on that program, and loading those designs (complete with rooms and walls) directly into Revit. The designer can then use this model to continue the development of the multiple designs.