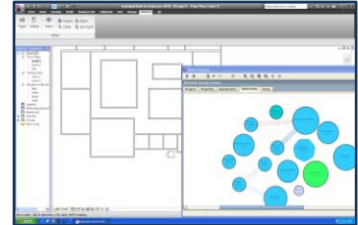


REVIT INTEGRATION

Auto-generation of Affinity Objects from Revit Families

Automatically generate **Affinity Template room objects from existing Revit Families**. Users can select which Revit Families to generate during synchronization, ensuring Affinity object libraries fully match, without manual intervention.

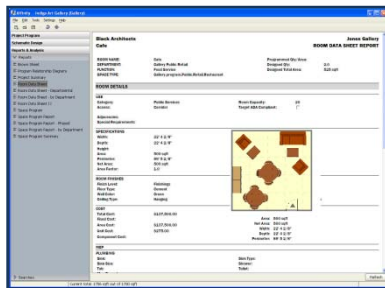


Synchronization of Multiple Linked Revit Files

New Affinity Preferences permit greater control over synchronization of multiple linked Revit files with a single Affinity project file.

REPORTING

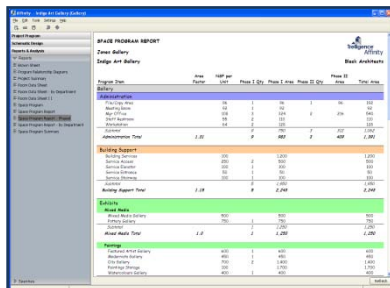
Complex Reports & Tables



Incorporate multiple report items and various formats into a single Affinity report.

- **Complex Tables** – Multiple report items can be added to individual table cells, enabling users to create arbitrarily complex tables – i.e. picture grids and tables within tables.
- **Headers & Footers** - Expanded content options are available for Headers and Footers including company logos and page numbers.

Iterative Loop Item



Algorithmic report items (e.g. loops and branches) enable even more complex report structures.

- **Increased efficiency** – Add just one Iterative Loop item to the Report to gather information on multiple project program items.
- **Expanded Usability** – Reports with Iterative Loop items can be applied to multiple project files and can also be completed prior to finalization of the project program.

Greater Consistency, Flexibility, and Control

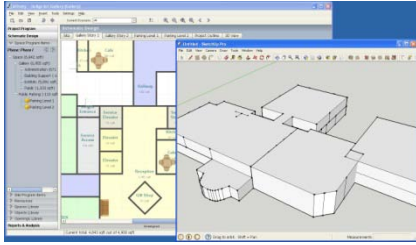
Affinity's improved **standards-based report renderer** results in greater consistency, flexibility, and control over printing and formatting. Print settings are now independent of the user's browser print settings, bringing greater consistency and user control over formatting.

Report Editor Improvements

Quickly enter report content in the Report Editor by using **shortcuts** (i.e. #pagenumber#) instead of the longer html code strings.

Improved navigation and editing controls in the Report Editor speed up the report building process.

2-Way Integration with SketchUp



Bi-directional integration between SketchUp Pro and Affinity allows for easy manipulation and improved presentation of the 3-Dimensional building view.

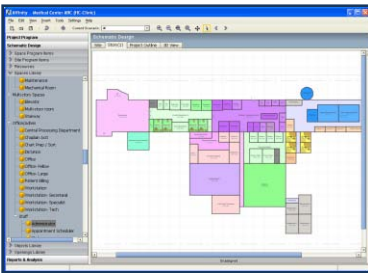
- **Quick 3D Manipulation** – Use SketchUp to manipulate the 3D building footprint and envelope.
- **Quality Presentation** - Develop presentation-quality rendering and graphics while keeping all design data fully up-to-date.
- **3D Design + Analysis** - Combines the 3D rendering and manipulation capabilities of SketchUp with the data-driven programming and reporting power of Affinity.

SCHEMATIC DESIGN

Additional Color Control for Background Images

Additional control over the color depth in background images. DPI options range from 75 to 300 for better quality and fast system performance.

Improved Formatting of Room Labels



Wrapping & Centering- Room labels will automatically center and wrap/unwrap to fit the size of the space in the Schematic Design view, and in print views

Scaling – Define the scale using the new Label Scale property in the View Settings dialog. Scale percentages are set as integers, e.g. a scale value of 2 will double the label size; a value of .5 will decrease it by 50%.

PERFORMANCE & USABILITY

Project-Level Settings

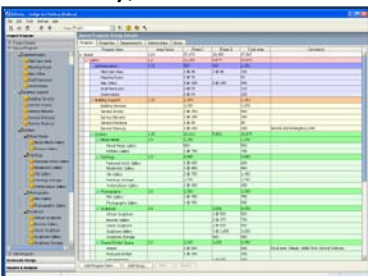
Affinity view settings, wall settings, and calculation of area (centerline/surface) are now set at the project level, enabling **automatic sharing of custom project-specific settings** amongst all project team members.

Improved Performance

Affinity 5.6.2 is faster and requires less memory, resulting in decreased load times and improvements in overall performance.

PROGRAMMING

Improved Usability, Flexibility, and Control



Affinity Architectural Programming includes several usability enhancements that increase user productivity during the programming process.

- **New configurability tools** - allow the user to create fully custom programming views to focus on the task at hand.
- **Additional data editing tools** - speed up the entry and editing of programmatic data for greater efficiencies.