

Conceptual Design

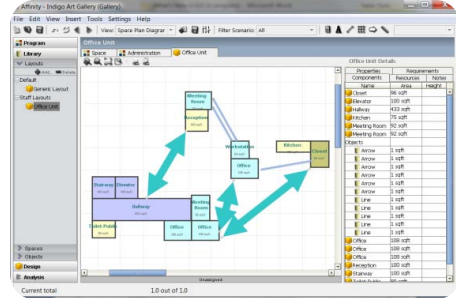
Affinity 6.0 introduces a new Layouts section (under the Library menu) & various graphical tools to enable the development of conceptual designs. The layout views are independent of the Program and Design sections, but can be added to the program or design at any time.

Layouts Section

Drag & drop spaces and elements to any layout view to quickly and easily work through various designs and concepts with your project team.

Use Layout Views to:

- Create, save, & review multiple conceptual designs
- Diagram processes
- Develop layouts for special space groupings (e.g. patient pods, departments, hospital wings)
- Create custom graphical client presentations



Overlay Tools

New overlays are available via icons in the toolbar of the Layouts, Design, and Relationships Diagram views. Overlays can be used to enhance any graphical view. Project teams can customize layouts and print them as addendums to reports.

Overlay tools include:



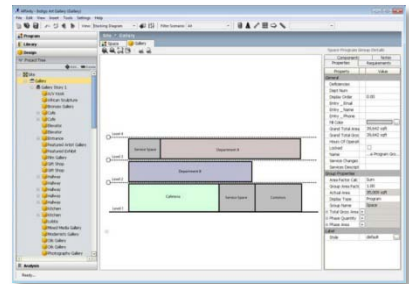
- openings (doors & windows)
- text boxes
- arrows & lines
- grids
- shapes
- measurements

Schematic Design

2D Vertical Stacking Diagram

2D Stacking is a new view in Design, available via the Views drop-down list.

- Drag/drop departments to floors in the diagram view
- Split departments
- Shift departments between floors
- View relative floor areas (row length represents the story area)



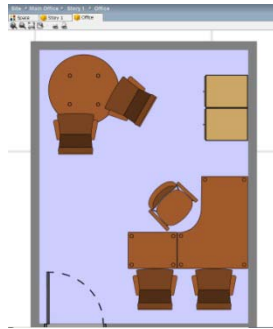
SD View Settings

Schematic Design view settings enable further customization of design views and content – great for client presentations.

- Change the shapes of all spaces in the open design view to rectangle, circle, or rounded rectangle
- Add Color Keys and Legends to visually represent specific properties
- Autoscale room labels, or enter a specific scale
- Adjust line width, grid size, and snap increments

Schematic Design (cont'd)

Schematic Room Layout View



Double-click any space in the Story to open its SD room layout view. This space-focused view enables project teams to:

- Easily add objects to create a room layout
- Quickly edit the room shape & dimensions
- Visually present complex room layouts & details (properties, requirements, etc.) to clients & other team members
- Focus on making changes to one space without affecting the surrounding layout

Space Editing Tools

Expanded design tools help to simplify shape editing and create more precise layouts.

- Right-click menu to add curved walls
- ALT+click short-cut to add new pull-points and create unique shapes
- Interactive dimensions pop-up for precise dynamic resizing of spaces
- Simplified style dialog to quickly edit room labels



Rendering of Walls & Openings

Affinity 6.0 delivers improvements to rendering in the Design views:

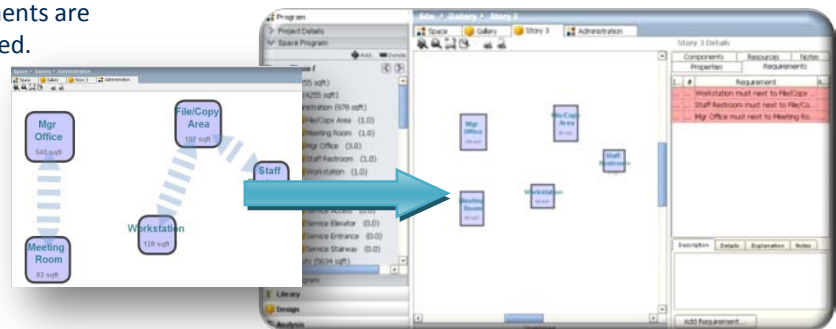
- New “double line” wall rendering style clearly shows interior & exterior walls
- Rendering of openings – doors & windows – is improved and openings are now available via the Overlays icons

Using Conceptual Design in Schematic Design Views

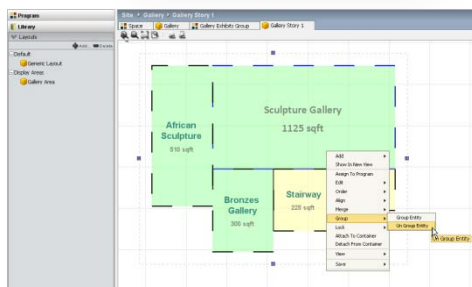
Graphical views from the Program and Library menus – room layouts, relationships diagrams, conceptual designs, etc. - can be transferred into Schematic Design, helping to ensure design-to-program compliance.

Relationships Diagrams in Design Views

Use relationships diagrams (in the Program) as a starting point in the Design. Refer to the requirements tab in the details pane to ensure that relationships and adjacency requirements are maintained.



Pre-Defined Layouts in Design Views



Drag/drop pre-defined space layouts (departments, units, wings, pods, etc.) from the Layouts section directly to the Schematic Design view. Keep the spaces grouped to maintain arrangement, or un-group them to better fit the Story design.