

Programming ■ Design ■ Design Validation ■ BIM Integration ■ Sustainability Analysis



Trelligence Affinity™ functional design software delivers a full suite of architectural programming, design, design validation, and reporting tools all within a single platform. Affinity enables you to streamline your BIM process through bi-directional integration with other BIM tools - Revit, SketchUp, ArchiCAD, AECOsim Building Designer, and IES VE.

Trelligence Affinity 8.1 delivers general performance enhancements and includes new functionality in Affinity Design, the Repository, and the Revit plug-in. Contact Trelligence or your Reseller for more information.

À

## New Features

### NEW STACKING DIAGRAM MANIPULATION - HORIZONTAL & VERTICAL

Re-arrange stories by dragging story labels (vertically). Drag departments or spaces on a story to re-position them horizontally. All changes can be reversed using the **reset** option in the right-click menu.

### UPDATE / REPLACE ROOM CONTENTS

Use the new **Schematic Design pop-up** to update rooms in your design with new or updated room configurations (fixtures, furniture, equipment) defined in the Program or the Template. The function will populate or re-populate room items / contents for all rooms selected in the design layout.

### CUSTOMIZE WALL THICKNESS

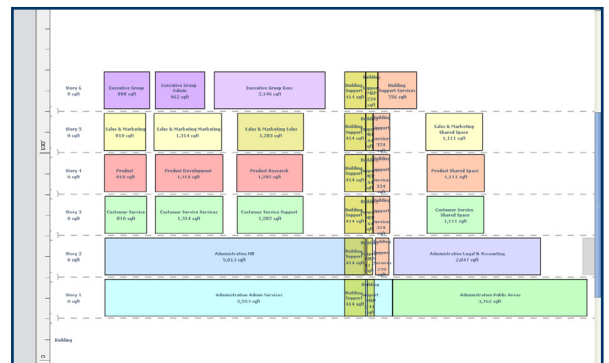
Use the **Custom Wall Thickness property** to assign different wall thicknesses at the room level. For example, core spaces such as stairwells and other specialty spaces with fire specifications often require thicker walls than other spaces.

### SEARCH & HIGHLIGHTING IN AUTODESK® REVIT:

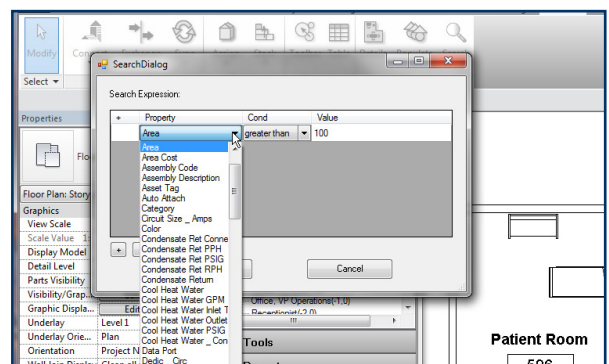
Affinity 8.1 makes it easier than ever to find program items in the Revit design using select or search options. Select any item in the **Program Tree** of the Affinity Program Toolbar to view the matching spaces / department highlighted in the Revit Design. Or, use the new **search function** to filter searches based on any **Program data properties** and view the matching items highlighted in the Revit design view. For example, view all rooms with Floor Finish Type = "Ceramic Tile".

### REVIT / AFFINITY REPOSITORY SYNC PERFORMANCE

This update includes improvements to the sync process between Revit and the Repository, along with performance enhancements to the checkout / update process.



Affinity Stacking Diagram



Affinity Program Toolbar in Revit