

Program + Design

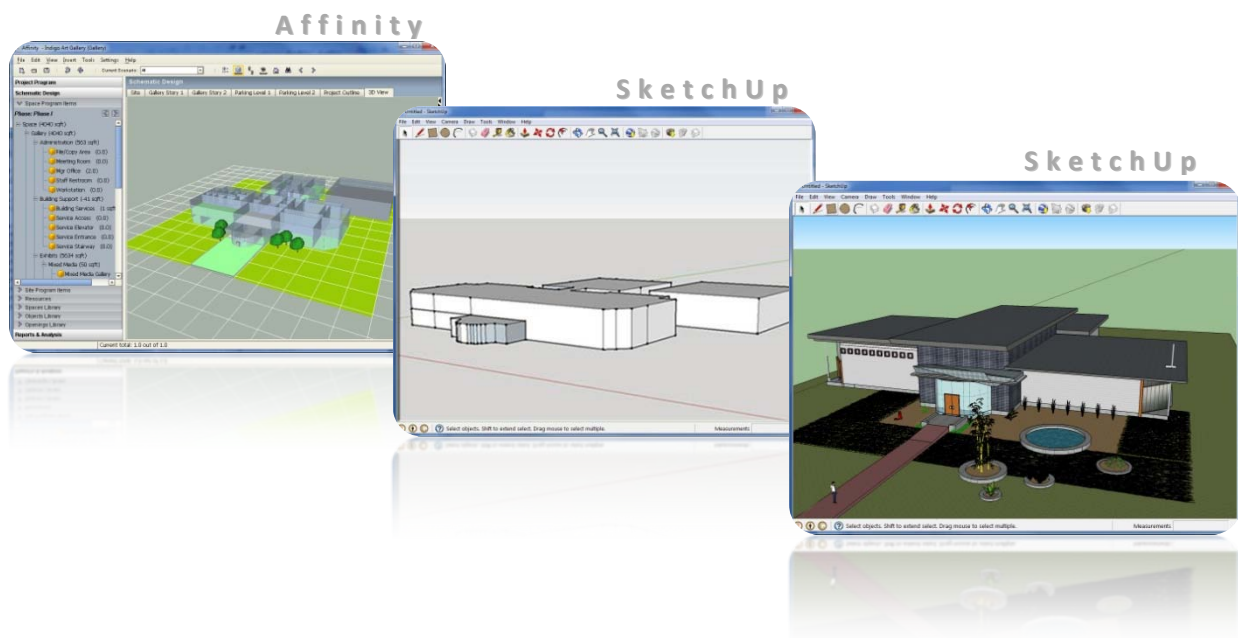
Affinity now includes 2-way integration with SketchUp, providing designers with a full set of tools to manage the early design process – from the data-intensive planning and programming phase, to the visualization phase working with conceptual 2D and 3D models. The bi-directional integration delivers the flexibility and functionality that designers need to effectively convey ideas to their clients and help them make informed decisions early in the design process, without losing track of valuable data produced at each stage of the process.

This new functionality allows designers to:

- easily edit 3-dimensional Schematic Design models
- create numerous rapid prototypes
- “wow” clients with 3-dimensional textured presentation renderings
- synchronously update the Affinity building envelope with envelope changes made in SketchUp
- compare building envelope changes with the Affinity Project Program, and
- view alerts when Schematic Design changes do not match the Project Program

By incorporating the intuitive, fluid drawing environment of SketchUp, designers can now take the structured programming information and freely sculpt any building shape imaginable. Once a Schematic Design has been finalized, the user can then open the building model directly in Revit or ArchiCAD (or export a .dxf drawing file to AutoCAD) to complete the design and construction documents. All of the data created in Affinity can be mapped directly to Revit or ArchiCAD and continuously synchronized for the duration of the project.

Throughout the design process, team members can generate any number of fully customizable Affinity Reports such as Room Data Sheets, Space Programs, Design-to-Program Analysis, etc. to monitor design progress and its compliance to the program requirements, present data-rich reports on the program and the design, and clearly present information and design concepts to the client.



How To...

The following is just one example of how the Affinity-SketchUp integration could be used in the design process:



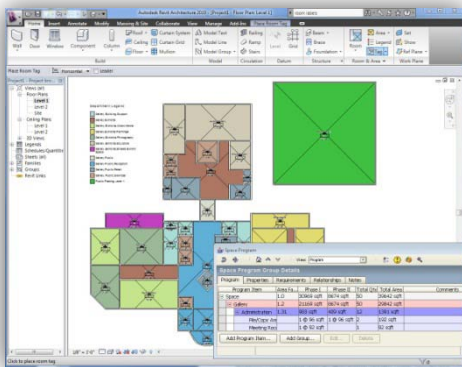
1. Create a Schematic Design layout/model in a new Affinity project.
2. Launch SketchUp from the Affinity project to edit the building envelope and/or exterior rendering. (*Bi-directional changes are made simultaneously to both Affinity and SketchUp models.*)

3. Load the completed Affinity project into your BIM application for further detailed design.
4. Re-synchronize with Affinity to analyze design compliance to the project program and generate reports.

SketchUp



Revit Architecture



Facts:

Affinity SketchUp integration works with **Google SketchUp 7.1**, available to download at:
<http://sketchup.google.com/download/>

SketchUp® is a registered trademark of Google, Inc.
Revit® Architecture is a registered trademark of Autodesk, Inc.